

PK 6500

Performance

PALFINGER

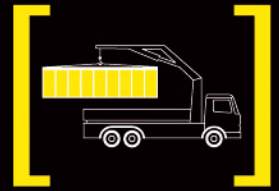


IN THE 6 METRE-TONNE CLASS
IT'S THE LIGHTEST AND THE QUICKEST



IT'S IDEAL FOR SPEEDY GOODS HANDLING ON SMALL VEHICLES →

The new PK 6500 *Performance* is an ideal crane for light vehicles, e.g. for use in the municipal sector. As standard it comes with everything required for tough daily duty: Know-how and leading technology from PALFINGER. This makes it safe and reliable, and provides you with high efficiency for every job. Users can rely on it because the after-service is also right.



WITH THE PK 6500 *PERFORMANCE* YOU HAVE THE OPTIMUM SPECIFICATION FOR ALL EVENTS

Return oil use

Use of the return oil in the extension system increases the operating speed by 30 per cent.

Load-holding valves

They prevent the crane arm from dropping and are fitted as standard on the elevating booms and extension cylinders. The valves are positioned in such a way that they are protected from damaged.

Ergonomic crane control

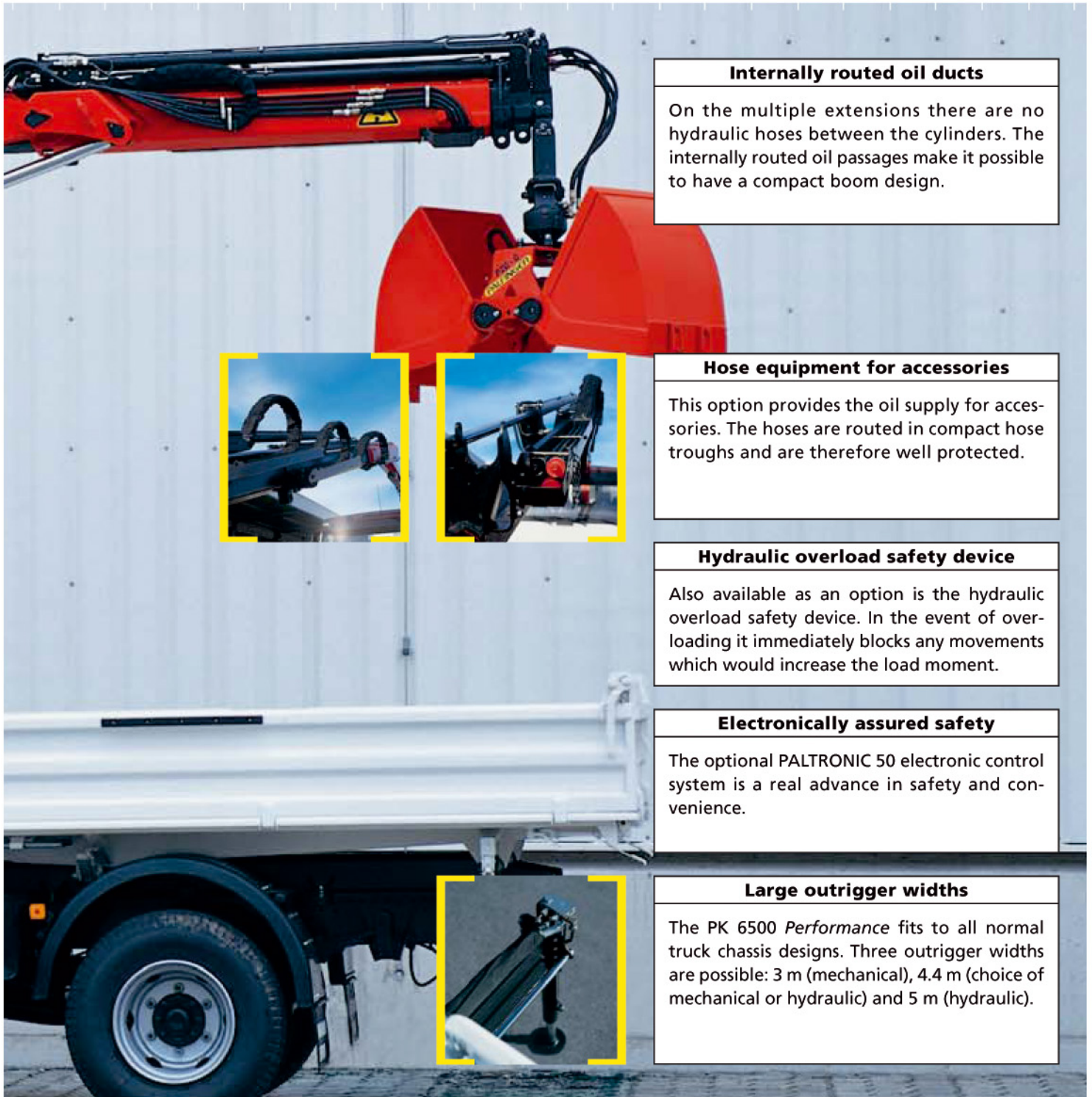
The operating levers for all crane functions are ergonomically arranged on the console. This provides comfortable, efficient working. The control console is mounted so that it is easy to service.

Radio control

The optional PALFINGER radio control system with digital data transmission provides maximum safety and convenience. The display integrated in the control console informs the crane operator continuously about the current capacity status of the crane.

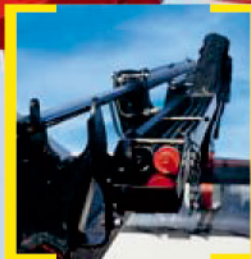


IT ALREADY MEETS THE FUTURE NEW CRANE STANDARD, EN 12999



Internally routed oil ducts

On the multiple extensions there are no hydraulic hoses between the cylinders. The internally routed oil passages make it possible to have a compact boom design.



Hose equipment for accessories

This option provides the oil supply for accessories. The hoses are routed in compact hose troughs and are therefore well protected.

Hydraulic overload safety device

Also available as an option is the hydraulic overload safety device. In the event of overloading it immediately blocks any movements which would increase the load moment.

Electronically assured safety

The optional PALTRONIC 50 electronic control system is a real advance in safety and convenience.

Large outrigger widths

The PK 6500 *Performance* fits to all normal truck chassis designs. Three outrigger widths are possible: 3 m (mechanical), 4.4 m (choice of mechanical or hydraulic) and 5 m (hydraulic).



PK 6500 *Performance*

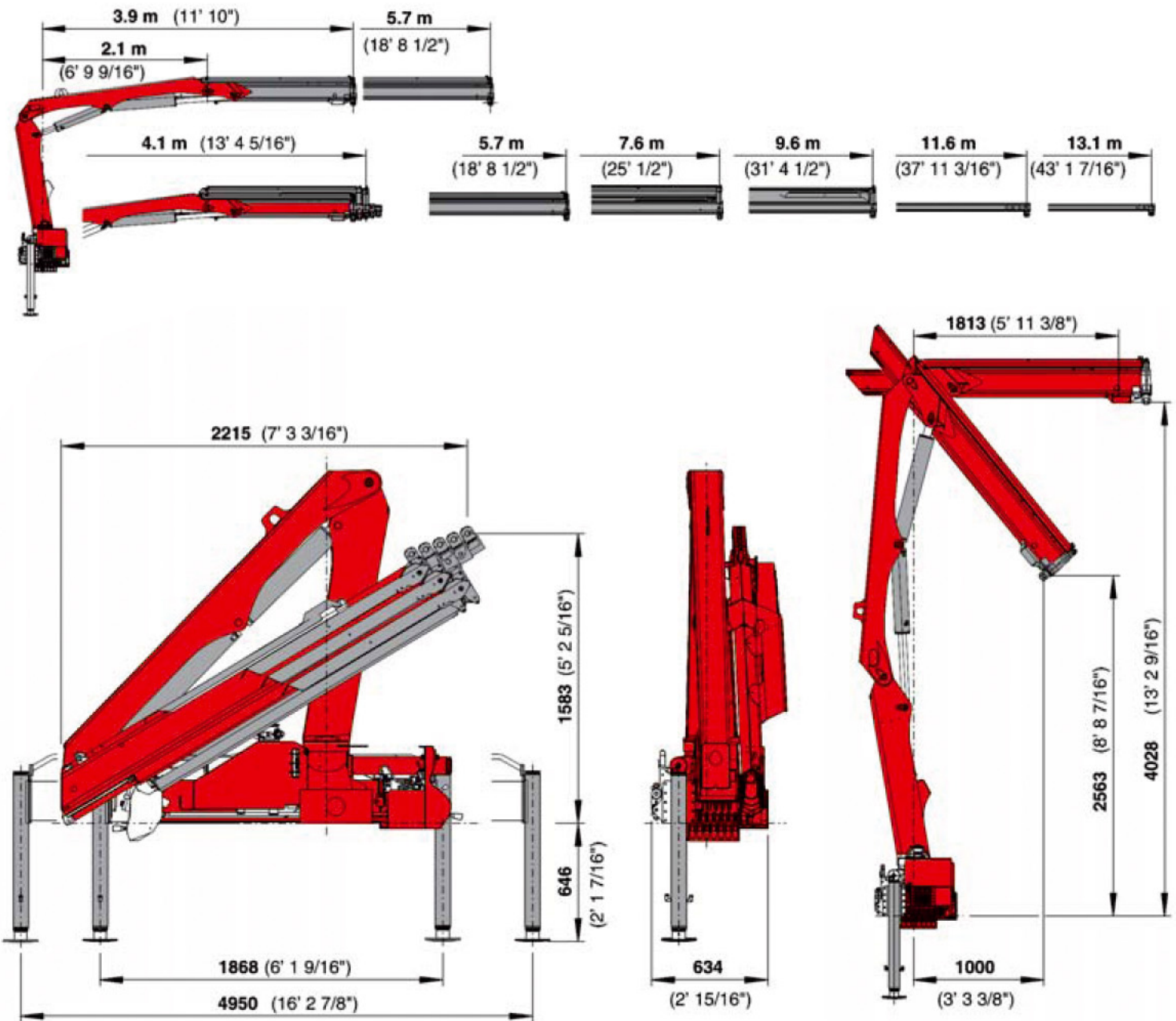
Technical specifications (DIN 15018 H1-B3)	
Max. lifting moment	56,9 kNm 5,8 mt 41950 ft.lbs
Max. lifting capacity	3300 kg 32,4 kN 7280 lbs
Max. hydraulic outreach	9,6 m 31'6"
Max. outreach	13,1 m 42'12"
Slewing angle	400 °

PK 6500 *Performance* Standard crane

Slewing torque	6,9 kNm 0,7 mt 5090 ft.lbs
Outreach	5,7 m 18'8"
Stabilizer spread standard	3,0 m 19'10"
Stabilizer spread maximum	5,0 m 16'5"
Fitting space required	0,57 m 1'10"
Width folded	2,3 m 7'7"
Operating pressure	315 bar 4568 psi
Pump capacity by radio remote control	20 l/min 4,4 imp.gal./min 5,3 US gal./min
Dead weight Standard crane	708 kg 1560 lbs

A GENUINE PALFINGER INCORPORATING YEARS OF PRACTICAL EXPERIENCE

PK 6500 Performance A



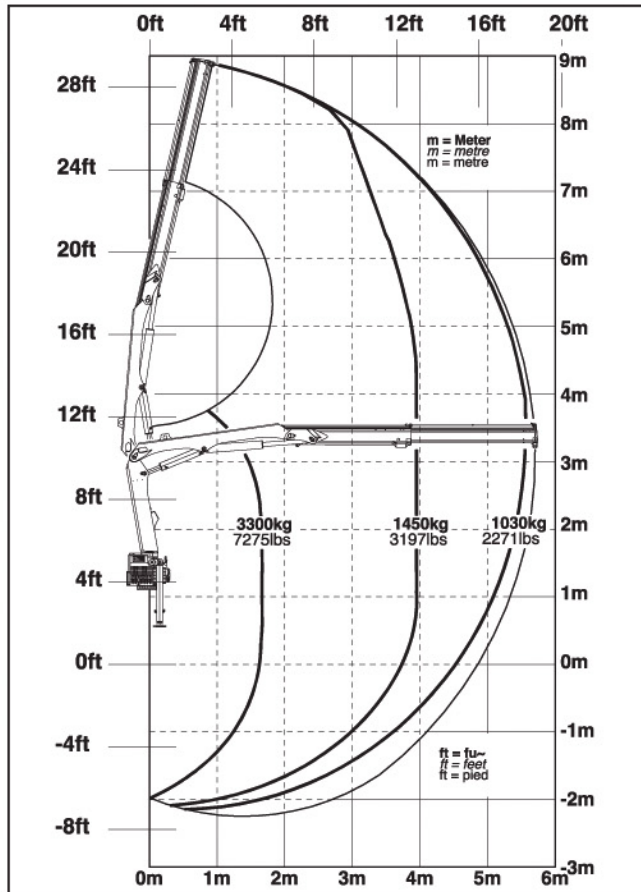
The pictured cranes are partly equipped with special extras and therefore do not necessarily represent standard models. Country-specific regulations are to be observed upon attachment.



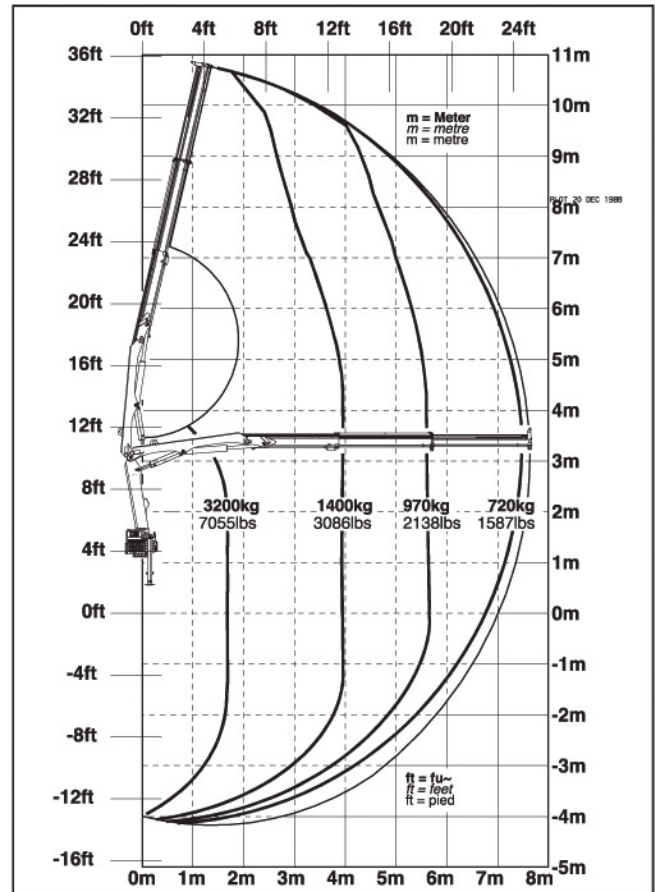
Right of technical changes reserved.
Specifications without obligation.

THE BIGGEST HYDRAULIC OUTREACH IN ITS CLASS!

PK 6500 Performance



PK 6500 Performance A



Max. lifting capacities

PK 6500 Performance hydraulic		
Outreach	Capacity	
1.6 m	3300 kg	32.4 kN
4.0 m	1450 kg	14.2 kN
5.6 m	1030 kg	10.1 kN
PK 6500 Performance A hydraulic		
Outreach	Capacity	
1.6 m	3200 kg	31.4 kN
4.0 m	1400 kg	13.7 kN
5.6 m	970 kg	9.5 kN
7.5 m	720 kg	7.1 kN
PK 6500 Performance B hydraulic		
Outreach	Capacity	
1.6 m	3140 kg	30.8 kN
4.0 m	1360 kg	13.3 kN
5.6 m	920 kg	9.0 kN
7.5 m	670 kg	6.6 kN
9.4 m	530 kg	5.2 kN
PK 6500 Performance B manual		
Outreach	Capacity	
11.4 m	330 kg	3.2 kN
13.0 m	220 kg	2.2 kN

The reaches are indicated for a 20° main boom position and are therefore not the maximum ones.

PK 6500 Performance B

